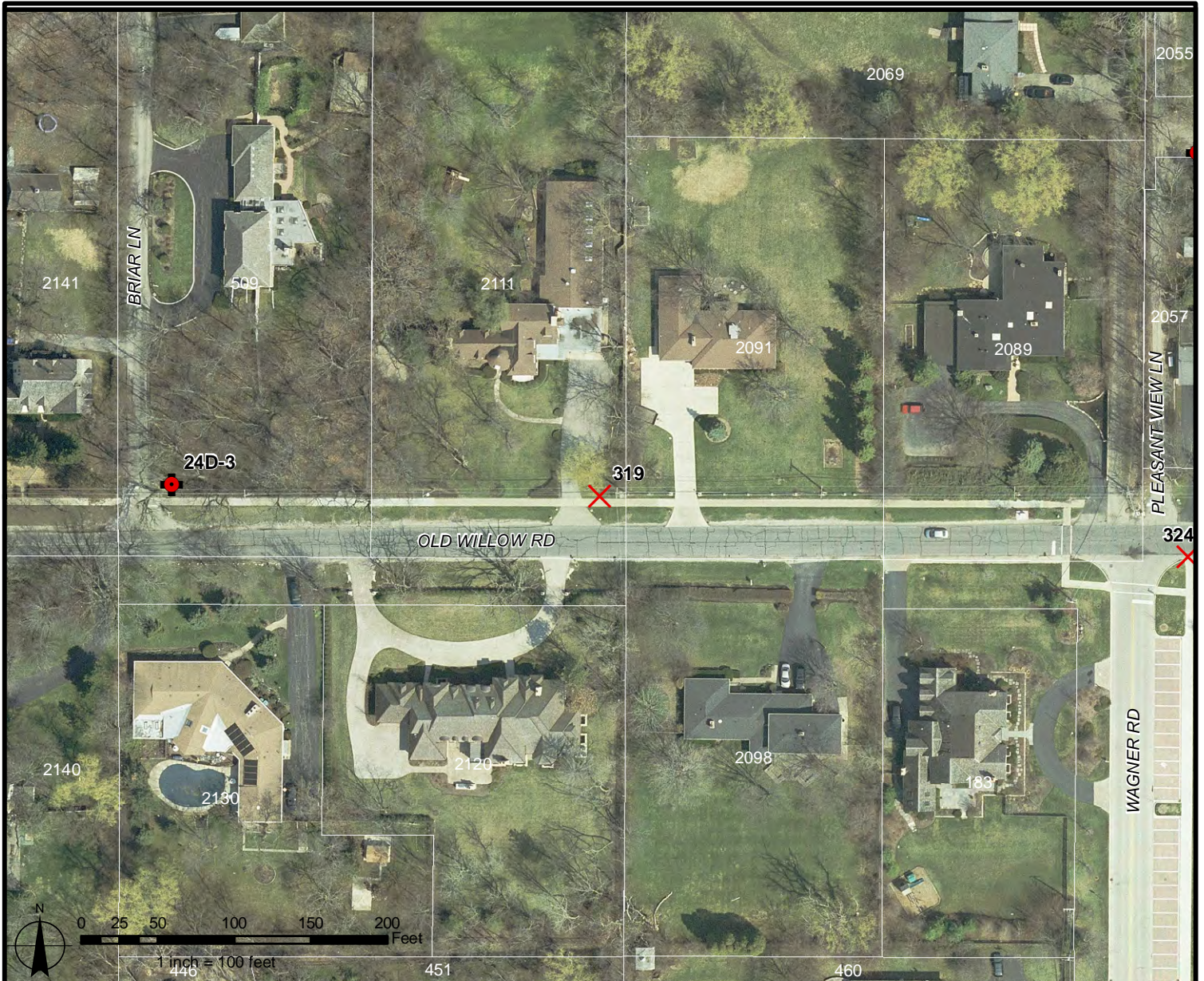








# Benchmark # 319



Sources: Cook County; Image Capture Date, 2008

Note: This information has been compiled from records and has not been verified through field surveys. The Village of Northfield does not warrant the accuracy of the elevations presented and recommends that users perform such field surveys as may be necessary to determine the adequacy of the information provided for the intended use.

## Legend

-  Hydrant
-  Iron Pipe
-  Mark
-  Monument
-  PK Nail
-  Railroad Spike

## DESCRIPTION

CROSS NOTH ON THE SIDEWALK LOCATED ON THE NORTH SIDE OF OLD WILLOW ROAD AND LOCATED APPROXIMATELY 7 FEET EAST OF THE 2111 OLD WILLOW ROAD DRIVEWAY.

## ELEVATION

631.700 FEET (NAVD 88)

631.900 FEET (NGVD 29)

**GEWALT HAMILTON**  
ASSOCIATES, INC.  
3509.001

